



Murrumbidgee
COUNCIL

CANDIDATE INFORMATION



Acknowledgement of **COUNTRY**

We would like to show respect and acknowledge the traditional custodians of the land, Elders past and present, and extend that respect to other Aboriginal and Torres Strait Islander people.

Pictured is local boy Bobby admiring the incredible mural which graces the walls of the Council Chambers at Jerilderie.

The mural is titled 'Yo-thun-ing-yuna-ngarratya', meaning 'Coming Together'. Created for the 2000 Olympic Games, it was hung in Parliament House to provide a visual welcome to visitors and wish them peace and safe travel.

The painting depicts various Aboriginal design elements, including the Eaglehawk, which is the Barundji/Barkindji totem. It also depicts a white feather to symbolise safe travel.

The mural was created by four Barundji/Barkindji artists: Elsie Black, Gertrude Gittins, Eileen Ballangarry and Sos Hawkins. These women can trace their family back at least 700 years as direct matriarchal descendants of the tribe. We sincerely thank these talented artists for this masterpiece and for allowing us to share it for all to see and appreciate.

Postal address: PO Box 5 Darlington Point NSW 2706

T: 1300 676 243 | E: mail@murrumbidgee.nsw.gov.au | www.murrumbidgee.nsw.gov.au

Coleambally Office: 39 Brolga Place Coleambally NSW 2707

Darlington Point Office: 21 Carrington Street Darlington Point NSW 2706

Jerilderie Office: 35 Jerilderie Street Jerilderie NSW 2716

CONTENTS

Acknowledgement of Country

Message from the General Manager 5

About Council and the Murumbidgee LGA 6

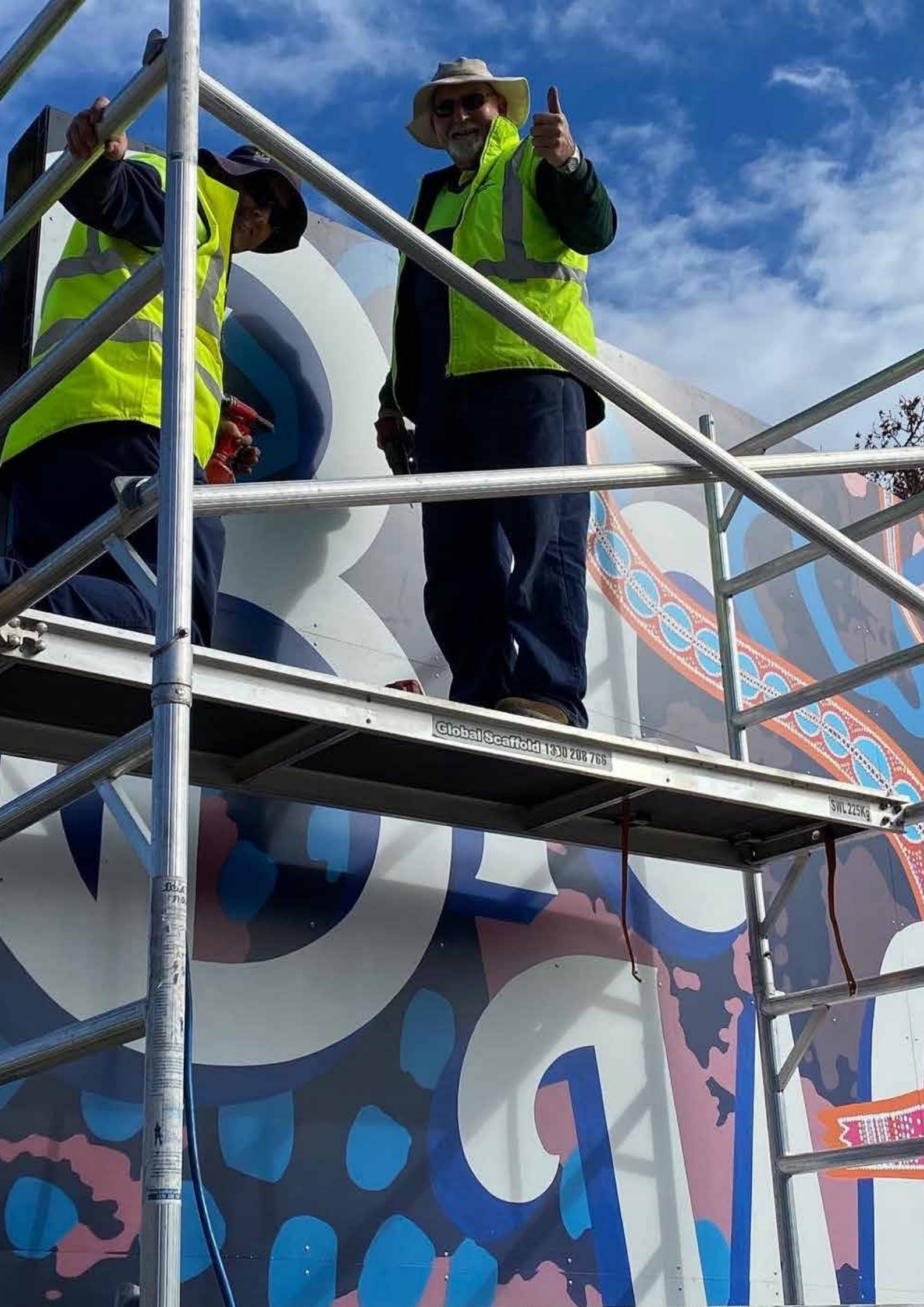
About values 9

Our organisation - structure 10

A snapshot of our workforce 11

Living in our LGA 12





Global Scaffold 1300 208 766

SWL 225Kg

MESSAGE

from the General Manager



‘Leave your mark in this newly created position’

Leave your mark in this newly created position.

An opportunity exists for a strategic thinker, prepared to add value to Murrumbidgee Council as a Design Engineer.

As Murrumbidgee Council’s Design Engineer, a large focus will be on you getting our projects shovel ready to pursue, for the opportunistic funding (that will become harder to get as time goes on). So, not only an ability to design, but an understanding of project management, would be most beneficial in full filling this role.

It will be challenging, but also rewarding. As the only Design Engineer in the organisation, you will not be focusing on just one area, but anything Council is looking to undertake that needs a design you will be part of it.

The Design Engineer will contribute to the delivery of Council’s objectives by being able to work independently, as well as within a team. As the Design Engineer, you will be part of the team which sees the job through from concept to construction and beyond.

If you’re strong of mind, willing to leave your mark and would like to enjoy all the benefits of a friendly rural community, I encourage you to contact Sarah Gurciullo – People and Culture Officer on 0417 765 465 or 03 5886 1200.

A handwritten signature in black ink, which appears to read 'John Scarce'. The signature is fluid and cursive.

John Scarce



About Council and the Murrumbidgee LGA

At Murrumbidgee Council, we provide services and support to a community of almost 3,500 residents in Coleambally, Darlington Point and Jerilderie. There are also many surrounding rural localities in our LGA (or part): Argoon, Bundure, Carrathool, Coree, Four Corners, Gala Vale, Logie Brae, Mabins Well, Mairjimmy, Nyora, Oaklands, Steam Plains, Waddi and Yamma.

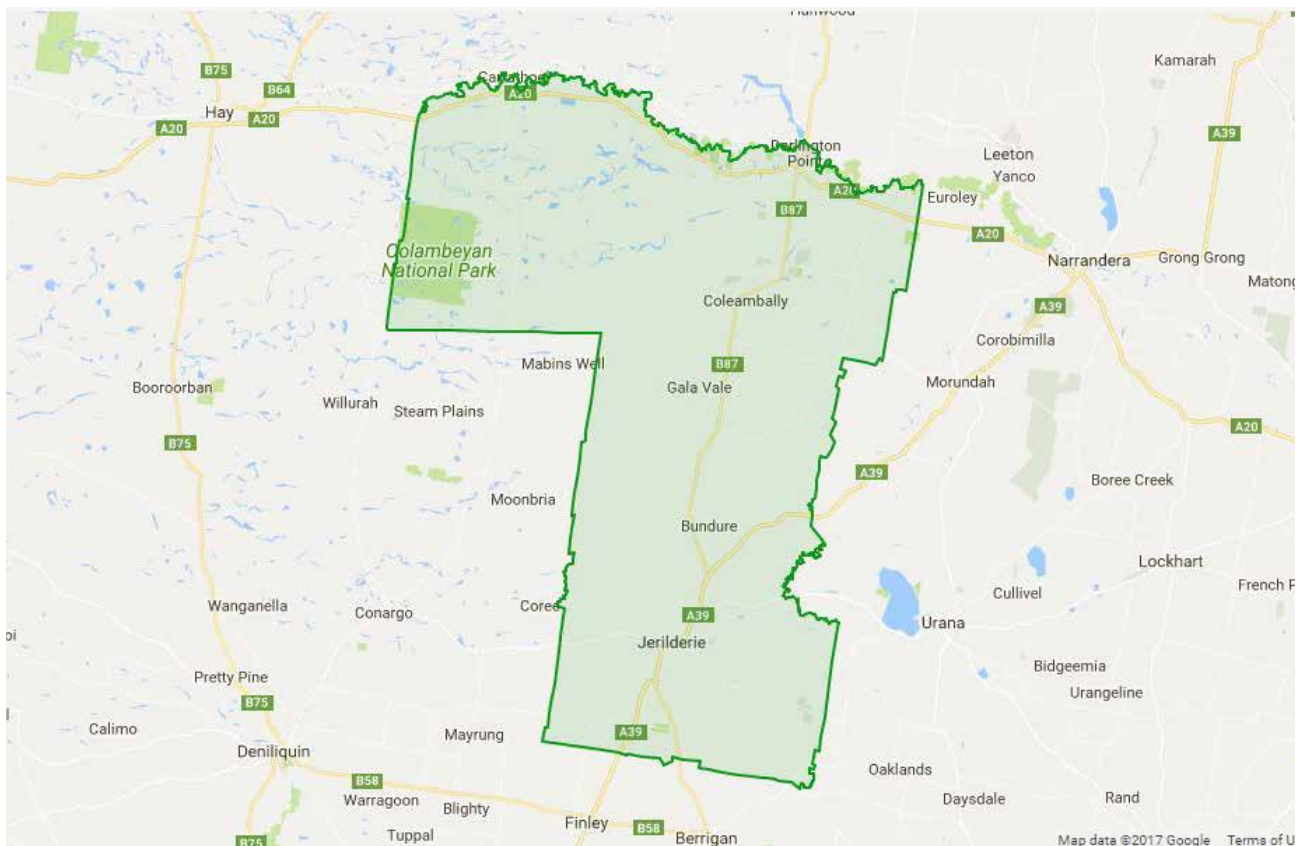
We are a relatively new Council, proclaimed on 12 May 2016 following the amalgamation of the former Jerilderie Shire Council and Murrumbidgee Shire Council. We have a strong presence in our Local Government Area, employing over 90 staff, and are regarded as an employer of choice in the region.

Our workforce is truly embedded in the organisation, with 93 percent of us living in the community we represent. Collectively, we share the common goal and vision of making our Council area the best it can be.

Our Council area is located in the beautiful Riverina region of south-western New South Wales. It is bounded by Carrathool Shire, Griffith City and Leeton Shire in the north, Narrandera Shire and Federation Council area in the east, Berrigan Shire in the south, and Edward River Council in the south west.

The area has a deep connection to its namesake river, the Murrumbidgee, with over 100 kilometres of natural river frontage. Beautiful Lake Jerilderie and the longest creek in Australia, the Billabong Creek, support a series of much loved and well used nature trails and walks.

Covering an area of 6,880 square kilometres, agriculture is the backbone of our economy. The mix of temperate climate, rural location, food and fibre production, and the natural water assets makes our area ideally suit to agricultural production.



Our area is currently part of two State electoral divisions of Murray and Albury, and the Federal electorate of Farrer.

Connected by the Kidman Way, the Murrumbidgee Council area is linked to major markets including Melbourne (approximately 420 kilometres south) via the Newell Highway, and Sydney (approximately 640 kilometres north east) via the Sturt Highway. These links have the potential to drive major economic opportunities.

We are one of 11 member Councils of the joint organisation RAMJO (Riverina and Murray Joint Organisation). RAMJO works collaboratively to establish strategic regional priorities and provide regional leadership for the joint organisation area,

identifying and advancing opportunities for inter-governmental cooperation on matters relating to the joint organisation area.

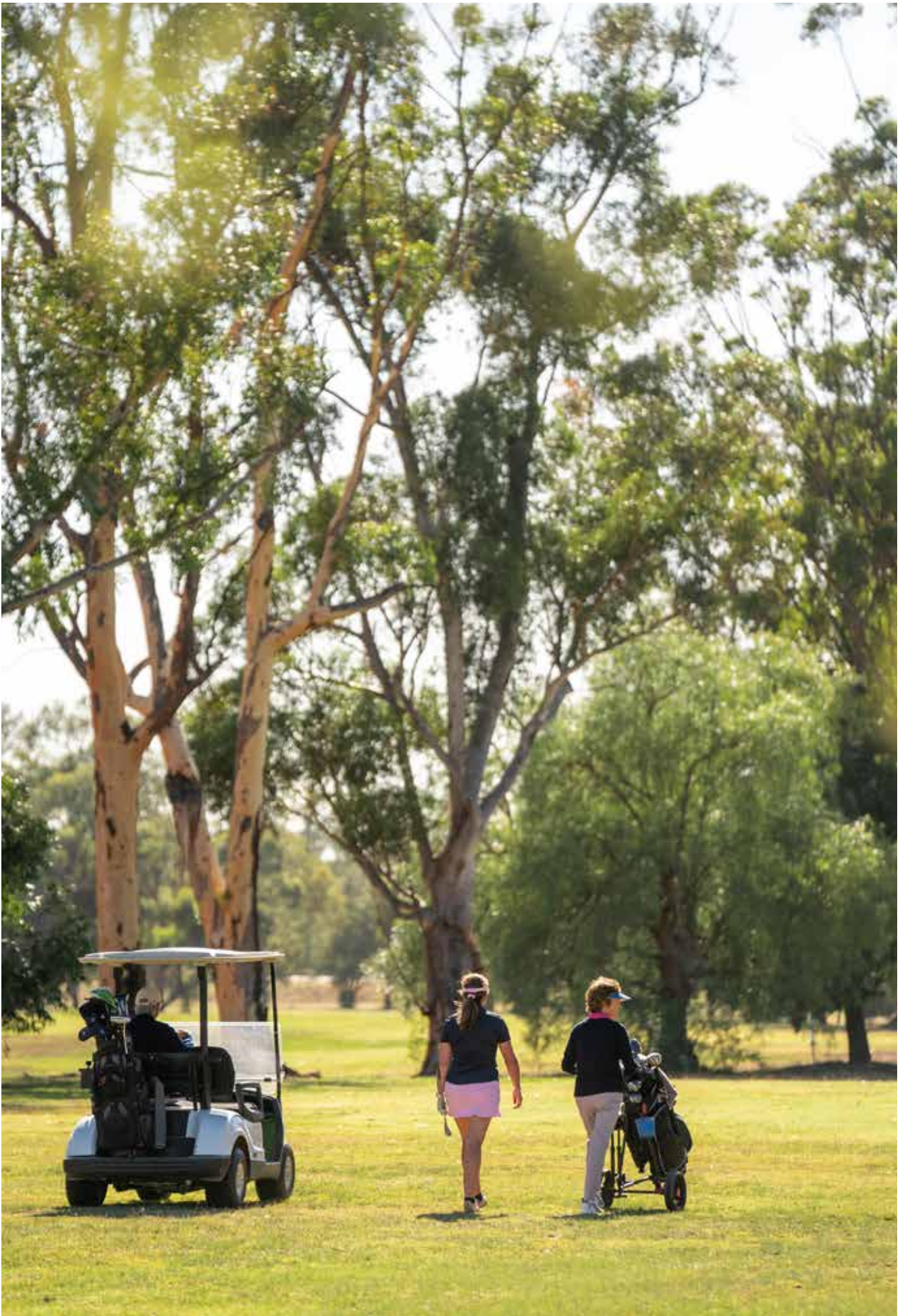
At Council, we play a leading role in providing services and facilities to support these agricultural activities. We look after 1,721 kms of roads, along with a library and a mobile library, ten community halls and facilities, nine public toilet blocks, three skate parks, six sporting ovals, two sporting complexes, three swimming pools and three cemeteries.

Distance to major cities by road

| Destination | Murrumbidgee LGA Towns | | |
|----------------|------------------------|-----------------------|-----------------|
| | Coleambally (km) | Darlington Point (km) | Jerilderie (km) |
| Sydney | 645 | 630 | 623 |
| Melbourne | 390 | 420 | 324 |
| Wagga Wagga | 190 | 160 | 165 |
| Griffith | 70 | 35 | 146 |
| Albury-Wodonga | 229 | 226 | 161 |
| Shepparton | 203 | 231 | 133 |

Airports are available at Griffith, Wagga Wagga and Albury.





Our values

Our purpose

Our purpose is to deliver quality services, creating a friendly, welcoming and engaged community.

Our corporate values

Creativity | Teamwork | Innovation

We strive to deliver quality services and well-maintained facilities.

We achieve this with strong, positive and trusted leadership that respects traditional principles and forward thinking, and through this, nurtures who we are, where we live and what we have built.

Our community vision

Smart growth. Empowered communities. Creating opportunities.

Our staff values

Trust

We have confidence in all cogs of the Council wheel, which leads to efficiencies through a co-operative approach.

Honesty

We are open, honest and accountable and have great and justifiable pride in our work.

Teamwork

We work together and embrace a team environment of inclusion, equality and open communication.

Respect

We genuinely respect each other and appreciate our individual skills, characters and backgrounds.



Our ORGANISATION

Our organisation is structured into three key departments headed by Directors. A fourth reports directly to the General Manager.



General Manager

- Executive Support
- Media & Communications
- People & Culture
- Workplace Health & Safety

Planning, Community & Development

- Customer Service
- Economic Development & Tourism
- Libraries
- Development Assets
- Strategic Planning
- Community Services
- Biosecurity
- Environmental Health

Infrastructure

- Assets
- RMCC (Roads Maintenance) Contract
- Maintenance
- Construction
- Building Maintenance

Finance

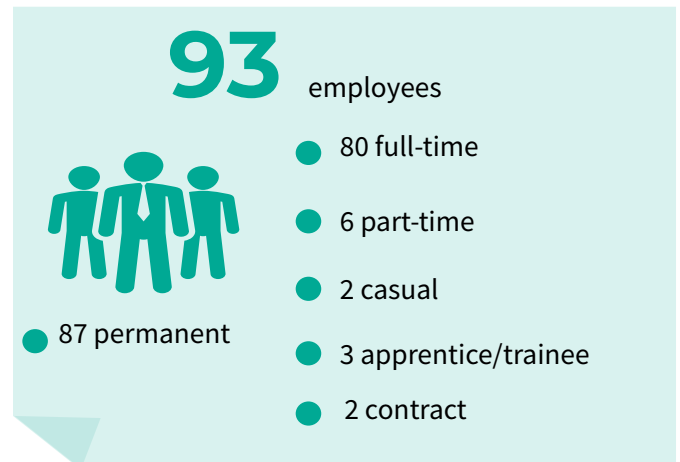
- Revenue
- Banking
- Creditors
- Rates
- Procurement & Stores
- Financial Management
- Payroll



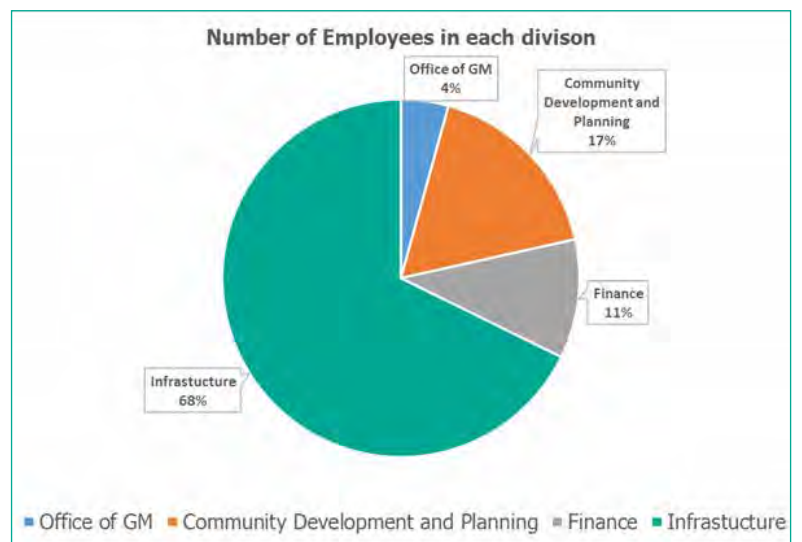
A snapshot of our **WORKFORCE**



Staff turnover rate
5%



Workers living in our LGA
93%



Statistics taken on 28 June 2022





Living in the **MURRUMBIDGEE LGA**

An enviable country lifestyle underpins the highly productive and innovative agriculture communities.

Business opportunity is plentiful. Value-add in agriculture, solar farm and biomass investment is advancing prospects for further development.

The industrial areas provide the towns with automotive and tyre services, transport, hardware

and building supplies, engineering and agricultural industries.

Larger centres such as Griffith, Leeton, Wagga Wagga, Albury/Wodonga and Shepparton provide access to wide regional services and facilities.



Coleambally

Coleambally has excellent schools. Coleambally Central School offers K to 12 education; St Peter's Primary School provides choice in the early years. Coleambally Pre-school also provides a great service for children.



Coleambally residents are sports mad! Tennis, netball, basketball, football, bowls, cricket and squash are catered for in the sports precinct in the heart of town. The sports precinct is currently undergoing extensive improvements and will be one of the premier sports facilities in the area. Other facilities include the outdoor swimming pool, clay target shooting and pistol club and a sand greens golf course.

Coleambally is serviced by a medical practice, a fully manned ambulance station, an aged care hostel and community health centre.

We have several large employers in the area, including Coprice Mill; Freedom Foods, who are Australia's premier processors of popping corn, and Coleambally Irrigation Co-operative Ltd.

Darlington Point

The town is only 30 minutes away from the City of Griffith. For daily needs, you will find a medical practice, pharmacy, NRMA garage, newsagent-hardware, supermarket, butcher, post office, police station. For entertainment and dining, there is the sports club which has a Chinese Restaurant, the historic Punt Hotel, and a highly renowned Italian restaurant.

There is a good range of accommodation available, including b&b's, a motel, cabins, the Caravan Park, the hotel and camping along the river.

A preschool and playgroup is located in the town. Children attend the Darlington Point Primary School and travel to neighbouring towns for their high school education.

Council will begin building a new housing subdevelopment in the near future.

Sport is popular in the community, with many opportunities to play team sport. There is a golf course,

skate park, swimming pool and splash park. The Murrumbidgee River and surrounding National Park provide a fantastic environment for walking, biking, boating, kayaking and fishing.

A few kilometres east of Darlington Point is the famous Altina Wildlife Park, which is 207 hectares of natural bushland on the banks of the Murrumbidgee River. Altina Wildlife Park hosts a wide range of animals and has a mission to create and maintain memorable educational visitor experiences, inspiring conservation of wildlife and the environment.



Jerilderie

Services include a newly-built Early Learning Centre, comprising pre-school and long day care, two primary schools, medical facilities, units for the aged, pharmacy, supermarket and police station. Sporting precincts offer football, netball, tennis, bowls and a gym.

Wunnamurra Estate offers a 'tree change for small change' in a majestic creek-side location.

Jerilderie Multipurpose Service (MPS) is a 15 bed facility with 3 acute care beds and 12 residential aged care beds. Jerilderie MPS provides a 24 hour Accident and Emergency Department. It also provides numerous clinical services to the community, including emergency care, palliative care, respite care and a range of community care and allied health services, supported by telehealth and specialty services on referral. The town also has an ambulance station.

A medical centre provides GP services, as well as dietetics, mental health, physiotherapy, diabetic education and podiatry services.



A bounty of produce

The area has a strong focus on agriculture and value added processing. Producers in our Local Government Area include: Billabong Produce, Saxvik Honey, Freedom Foods, Bonic Wines and Yarrow Park Olive Grove and Vineyard.

Natural wonders

The unique river environment with majestic river red gums is a haven for bird and animal life. Birds include kingfishers, honeyeaters, parrots and water birds.

Kangaroos, wallabies, possums, and the occasional emu makes caravanning and camping an Aussie bush experience.

The magic birdlife haven of the 2,000 hectare Murrumbidgee Regional Park near Darlington Point and bushland surrounding the township of Coleambally and Jerilderie are other natural attractions.

We are spoilt for choice with beautiful camping spots along the Murrumbidgee River and the Billabong.

History

Established in 1859, **Jerilderie** is nestled on the banks of Australia's, and reputedly the world's, longest creek. The Billabong Creek winds its way through Jerilderie and 321 kms of quintessentially Australian landscape.

Nothing quite so drastic has happened since the Ned Kelly Gang visited in 1879. Ned wrote his manifesto, The Jerilderie Letter, whilst the gang kept the town's prominent citizens hostage in the local Hotel. Today, the Kelly bank vault is on view in the Royal Mail Hotel.

Sir John Monash also lived in the town as a child and holds an important place in Jerilderie's history.

Visitors can walk the Powell Street heritage or experience the serenity of Billabong Creek and Lake Jerilderie.

Darlington Point has a strong connection with our first Australians. The town was home to the Warangesda Aboriginal Mission from 1880-1884. During that time, it was the site of early political



activism, including an Aboriginal community strike in 1883.

The town itself was established as a river crossing town with pastoral leases. From 1850, paddle steamers transported produce, with a red gum wharf being built in 1881. Old wharf pylons can still be seen 200 metres upstream from the caravan park. Travellers once crossed the river by punt. A single bascule bridge was later built to accommodate both road and river traffic and remained in use until 1979. This magnificent old bridge was later re-assembled and today sits at the entrance to the Darlington Point Caravan Park.

Coleambally's history revolves around water because it was specifically built to take advantage of the additional water made available through the Snowy Mountains Scheme. The town was established in 1968 to service the Coleambally Irrigation Area.

The scheme called for the water of the Snowy and Eucumbene Rivers to be diverted inland through a series of tunnels and dams, under the Great Dividing Range, and into the Murray and Murrumbidgee Rivers. The scheme has since been described as one of the Seven Engineering Wonders of the World.

Construction of the main channel began in 1958 with four large Ruston Bucyrus Erie draglines doing the bulk of the excavating. is a vibrant and harmonious community.

Festivals and Events

Riverina Classic Catch and Release Fishing Competition – Darlington Point

This highly popular event is held annually over three days in February each year. As a charity event, proceeds are distributed to a chosen charity each year and also used to re-stock the Murrumbidgee River with native fingerlings. The restocking program is vital to securing a healthy and sustainable fishing future.

Jerilderie Gold Cup

Held in September each year, this event is a fabulous day out with fashions, fun and quality racing.

Jerilderie Ned Kelly Show 'N' Shine and Markets

Held annually in May in the Lake Precinct, this event features classic cars, bikes and tractors.

Taste Coleambally

Taste Coleambally is a biennial food and farm festival showcasing the unique Coleambally community and everything it has to offer, from farming and produce to country spirit and creativity.

The festival grew from a dedicated group of locals wanting to show consumers how they grow food for Australia and the world in a sustainable and productive manner. Coleambally Irrigation is one



of the most water efficient delivery systems in Australia and each year one average farm feeds over 4,500 people.

Darlington Point Annual Spring Festival

The Spring Festival, held annually in September in CWA Park, attracts crowds from near and far. The day has a wonderful atmosphere with live music and food, craft and produce from over 40 stalls, and train rides which takes passengers for a picturesque ride around town. There is also a highly popular car display with cars and bikes on show from the Expatriates Auto Club.

Jerilderie Working Dog Auction

Held every February by the Jerilderie Apex Club. This is an important fundraiser for the town with the donations made to local charities.

Riverina Vintage Machinery Club Rally, Coleambally

This event is also held every second year in August (alternate years to Taste Coleambally). Held over two days, it features the starting of the giant Bucyrus dragline at Coleambally's entrance, a vehicle trek, vintage tractor pull and many display.

Riverina Redneck Rally and Redneck River Run

These are two important events on the calendar which raise valuable funds for the community and provide lots of fun for the community. The first is a car rally and the second is a trip by tinnies along the Murrumbidgee River from Darlington Point.

League of Silent Flight, Jerilderie

Each year in June, gliding enthusiasts converge on Jerilderie for this model gliding event.

